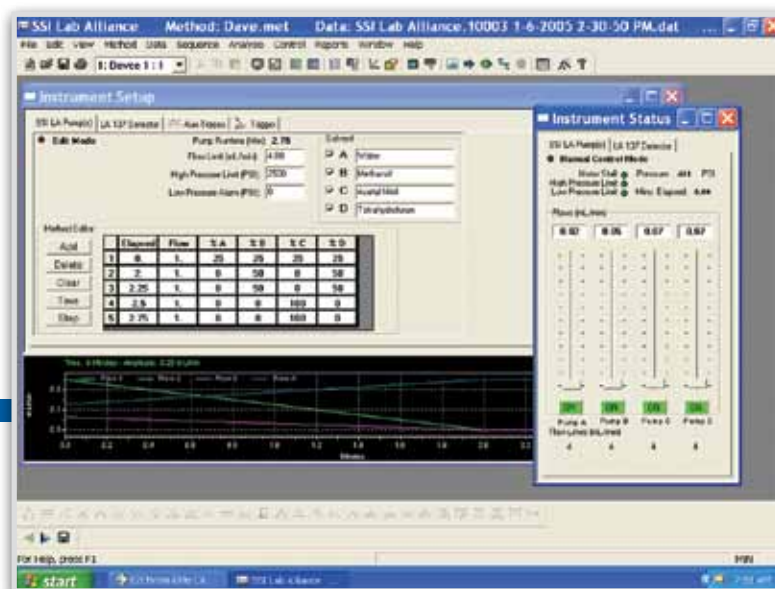


EZChrom™ Data Systems

EZChrom SI™ makes routine analyses as simple as 1-2-3.

What can EZChrom™ do for you?

- EZChrom™ takes you from configuration to analysis in just 3 easy steps.
- Flexible Report Management
- An affordable cost-effective solution with control of instrument modules from numerous vendors or analog acquisition from any source.



What is EZChrom SI™?

EZChrom SI is a complete data acquisition, processing, and control package for 1 instrument. Based on the highly popular EZChrom Elite™ software package, EZChrom SI is the ideal solution for laboratories who want a simple-to-use chromatography data system with comprehensive software features and instrument control. It is intended to provide the basic requirements for data acquisition and optional instrument control for a single workstation. EZChrom SI consists of two software modules: EZChrom SI Configuration and EZChrom. With EZChrom, instrument control and analysis is reduced to just 3 steps: Configure, Run, and Report.

1 - Simple configuration

EZChrom SI allows the installation of any one of the extensive choices of GC or HPLC control options (2D data acquisition). This is ideal for laboratories that have legacy equipment with digital control capability. With Scientific Systems' EZChrom, you can run pumps, detectors, and autosampler, and collect data from one software. If the same instrument is always used, configuration need not be repeated.

2 - Run in one window

Once the instrument is configured, any user can launch EZChrom, immediately choose a method and submit samples for acquisition. All this operation is done in EZChrom SI's Single Window Access environment — a design that greatly simplifies tasks for the casual or novice user. Either single runs or sequence runs can be performed. Users can still take advantage of the intelligent features in SmartSequence™, a powerful tool that automates much of the decision making process based on user defined criteria. If methods or sequences need to be created from scratch, the simple wizards will guide you through a stepwise process.

3 - Flexible report management

Within any method exists a report template. Users simply select from standard templates and can produce the reports they require. EZChrom SI's custom report editor may be used to modify existing templates or to create new report templates.

4- Trade up when you're ready

When you are ready to upgrade to the full features of EZChrom Elite™, including multi-instrument control in a networked enterprise, PDA (3D data handling capability), extensive user and project administration, electronic signature, advanced reporting and audit trail functionality of the full data system, your data files and instrument configurations will be forward compatible.

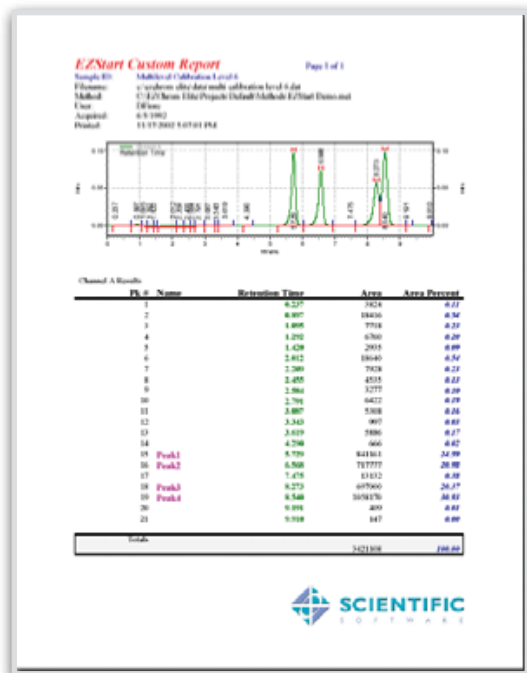
EZChrom™ Data Systems

EZChrom SI™ makes routine analyses as simple as 1-2-3.

What can EZChrom SI™ do for you?

Here are just a few of the benefits:

- Takes you from configuration to analysis in just 3 steps.
- An affordable cost-effective solution with control of instrument modules from numerous vendors or analog acquisition from any source.
- Facilitate productivity further with Method and Sequence wizards.
- Respond automatically and intelligently to real-world conditions with SmartSequence™ technology.



Typical report generated from EZChrom™

Ordering Information

DESCRIPTION	PART No.
EZCHROM SI™ SOFTWARE EZChrom SI Software with single instrument license for Agilent based systems.	AGG4679AA-104
EZCHROM ELITE™ EZChrom Elite™ Workstation with software license for up to 4 instruments. Requires licenses for instrument and diode array if present. Additional licenses for up to 4 systems may be added.	AGG6711AA
EZCHROM™ INSTRUMENT LICENSE Instrument license for Agilent based system.	AGG6716AA
3D PDA/DAD CONTROL & DATA PROCESSING	AGG6771AA

PUMP CONTROL	SSW0104
Start-Up Kit for EZChrom Elite™ with digital pump control only. Includes: Scientific Systems Pump Control Software, Hardware and Connections Kit. Licenses must be ordered separately (see below). Requires G6711-64001 and G6711-64003 below.	

INSTRUMENT BUNDLES AND LICENSES	
EZCHROM ELITE™ ANALOG INSTRUMENT BUNDLE Includes: (1) G6111AA - EZChrom Elite Workstation Core (1) G6716AA - Analog Instrument License	G6711-64001
EZCHROM ELITE™ 2DLC BUNDLE Includes: (1) G6111AA - EZChrom Elite Workstation Core (1) G6718AA - Agilent LC Instrument License	G6711-64002
EZCHROM ELITE™ 3DLC BUNDLE Includes: (1) G6111AA - EZChrom Elite Workstation Core (1) G6718AA - Agilent LC Instrument License (1) G6771AA - PDA/DAD Control and Data Processing	G6711-64003

EZCHROM™ w/ HITACHI LC BUNDLE Includes: (1) G6711AA - EZChrom Elite Workstation Core (1) G6719AA - Hitachi LC Instrument License	G6711-64004
--	--------------------

Please Note: EZChrom SI™ and EZChrom Elite™ are trademarks of Agilent Technologies. EZChrom™ software requires Windows XP Professional or later. Microsoft Internet Explorer version 4.0 or greater is also required. RS232 ports on the computer may be required for some instruments.

PSS1060-B-042312